

Edit.	R01	Docu. Title	2706-1005P		
Date	Sep 4, 14			Page	Page 1 of 1

No.	Drawing No.	Name	Material	Spec.	Quantity
1	2706-1005	Grinding wheel inside cover			1
2	2706-1013	Locking button			2
3	HJ1-008	Handle		66491	1

Property of KENT Industrial USA
Do Not Reproduce

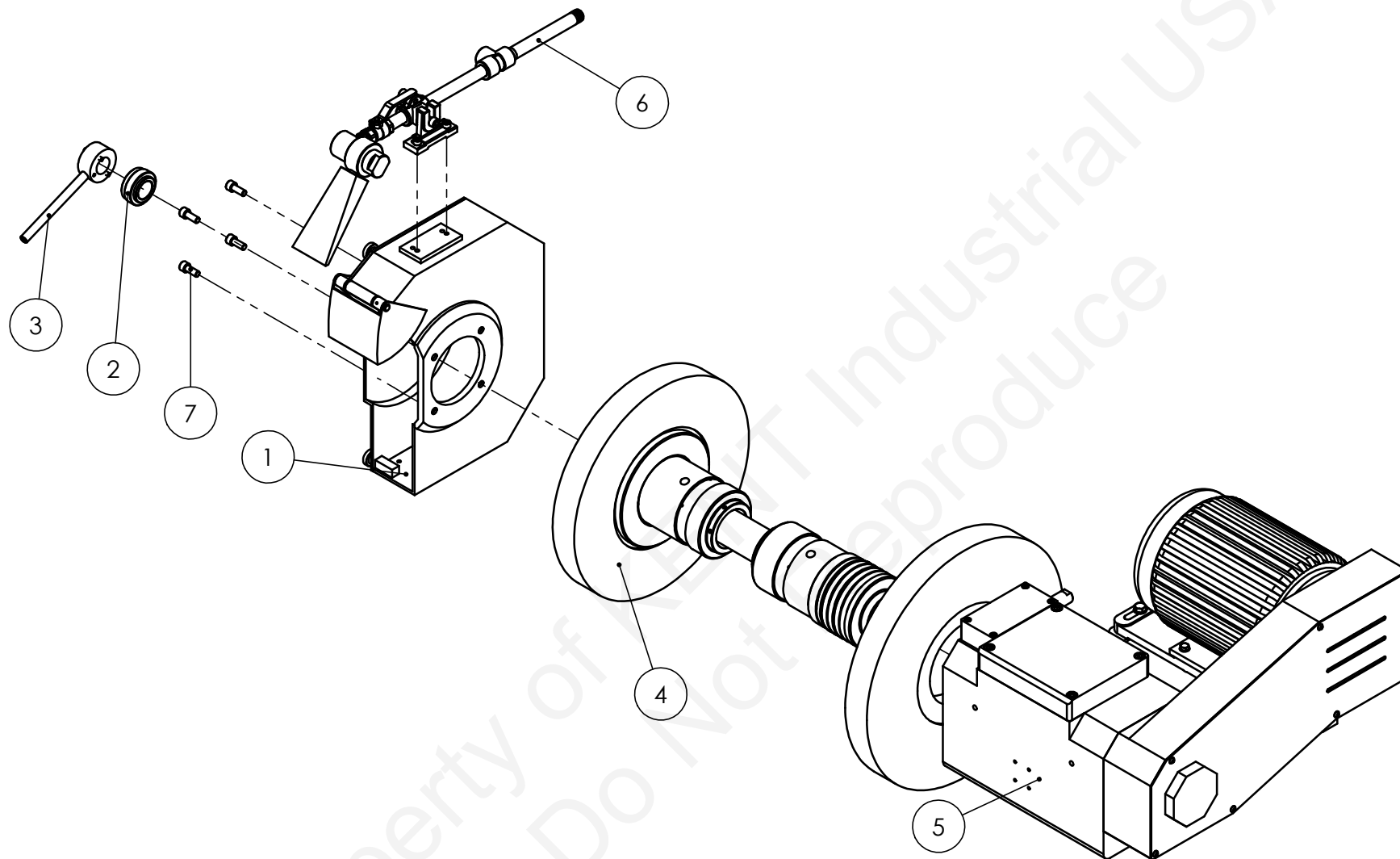
Edit.	R00	Docu. Title	2706-1046P		
Date	Sep 4, 14			Page	Page 1 of 1

No.	Drawing No.	Name	Material	Spec.	Quantity
1	2706-1046	Pressure switch box			1
2	2706-1047	Spring			1
3	2706-1048	Sleeve			1
4	2706-1049	Oil pressure switch shaft			1
5	2706-1050	Oil separator			1
6	HOP-P014	O ring		P14	1
7	HS3-08010	Set screw		M8*10L	1

356.09 kg

R00

2 / 2



	□	□	□
	±	±	±
1-4	0.05	0.1	0.3
4-16	0.07	0.2	0.5
16-63	0.1	0.3	0.7
63-250	0.2	0.5	1.2
250-1000	0.3	0.8	2
1000-2000	0.5	1.2	3.1

1:10

C1

R1

1

2014/03/06

Grinding wheel set

KUG-27

2706-10P01

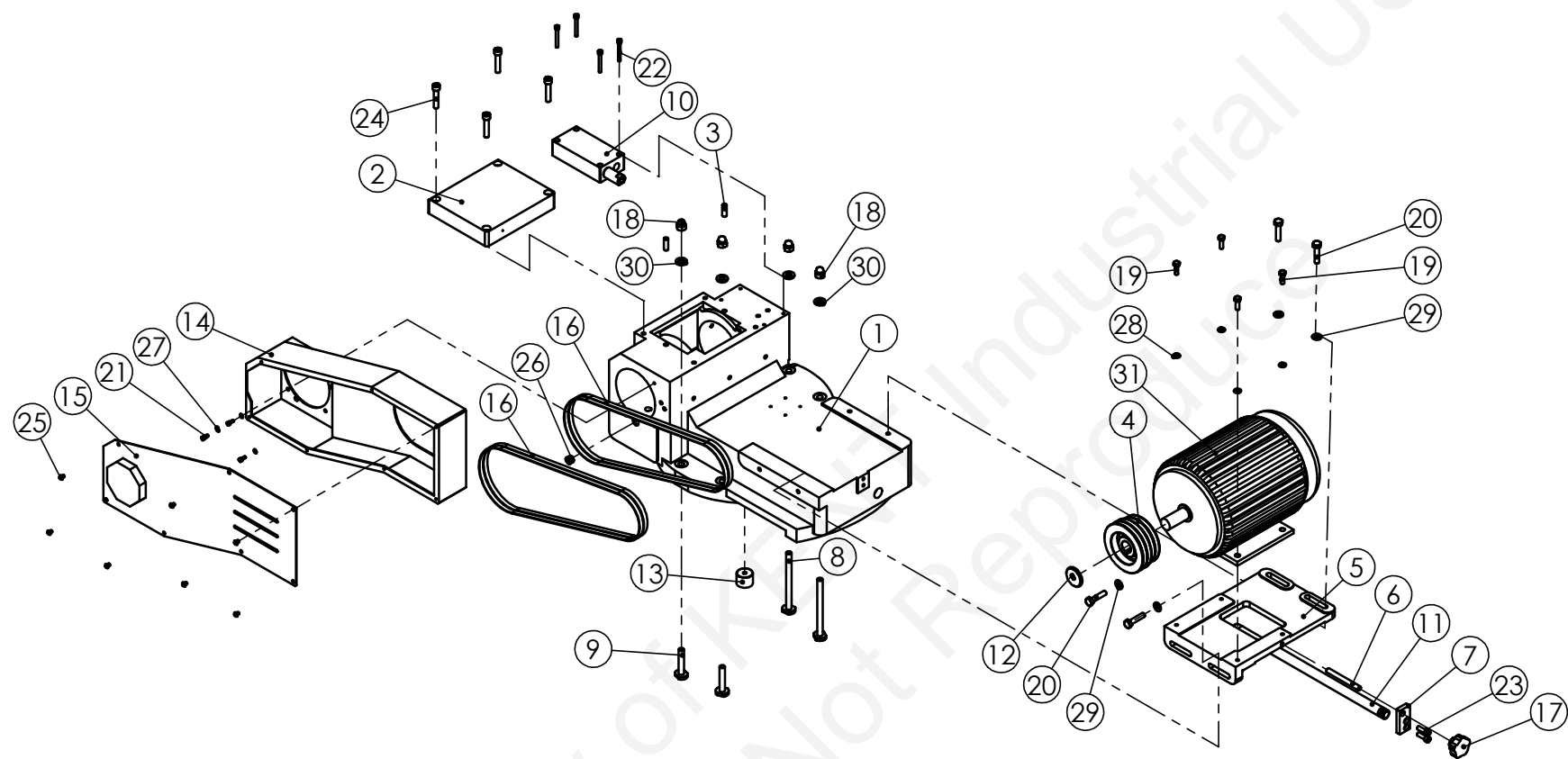
Edit.	R00	Docu. Title	2706-10P01		
Date	Aug. 26, 14			Page	Page 1 of 1

No.	Drawing No.	Name	Material	Spec.	Quantity
1	2706-1005P	Wheel cover			1
2	2706-1068	Nut			1
3	2706-1070P	Handle			1
4	2706-11P01	Grinding wheel spindle set			1
5	2706-12P01	Grinding wheel head			1
6	2706-6024P	Cooling pipe shelf			1
7	HS2-10025	Hexagonal screw		M10*25L	4

232.96 kg

R00

2 / 2



	□	□	□
	±	±	±
1-4	0.05	0.1	0.3
4-16	0.07	0.2	0.5
16-63	0.1	0.3	0.7
63-250	0.2	0.5	1.2
250-1000	0.3	0.8	2
1000-2000	0.5	1.2	3.1

1:15

C1

R1

1

2014/04/14

Grinding wheel head

KUG-27

2706-12P01

Edit.	R00	Docu. Title	2706-12P01		
Date	Sep 16, 14			Page	Page 1 of 2

No.	Drawing No.	Name	Material	Spec.	Quantity
1	2706-1001-1	Grinding wheel base			1
2	2706-1004	Grinding wheel set cover			1
3	2706-1025	Fixing Pin			2
4	2706-1036-6	Belt pulley			1
5	2706-1041	Motor base			1
6	2706-1042	Adjustment nut			1
7	2706-1043	Motor adjustment block			1
8	2706-1044-1	T type bolt			2
9	2706-1045-1	T type bolt			2
10	2706-1046P	Pressure switch cover set			1
11	2706-1051	Oil tube			1
12	2706-1096	Motor pulley washer			1
13	2706-2034	Center pin			1
14	2706N-1038	Pulley cover			1
15	2706N-1039	Pulley outside cover			1
16	HB2-11M1180	Poly flex 11M*1180			2
17	HJ1-006	Handle		66476	1
18	HN2-12175	Nut		M12*P1.75	4
19	HS1-08025	Hexagon Screws		M8*25L	4
20	HS1-10045	Hexagon Screws		M10*45L	4
21	HS2-05012	Socket Head Cap Screws		M5*12L	3
22	HS2-06050	Socket Head Cap Screws		M6*50L	4
23	HS2-08025	Socket Head Cap Screws		M8*25L	2
24	HS2-10050	Socket Head Cap Screws		M10*50L	4

Edit.	R00	Docu. Title	2706-12P01		
Date	Sep 16, 14			Page	Page 2 of 2

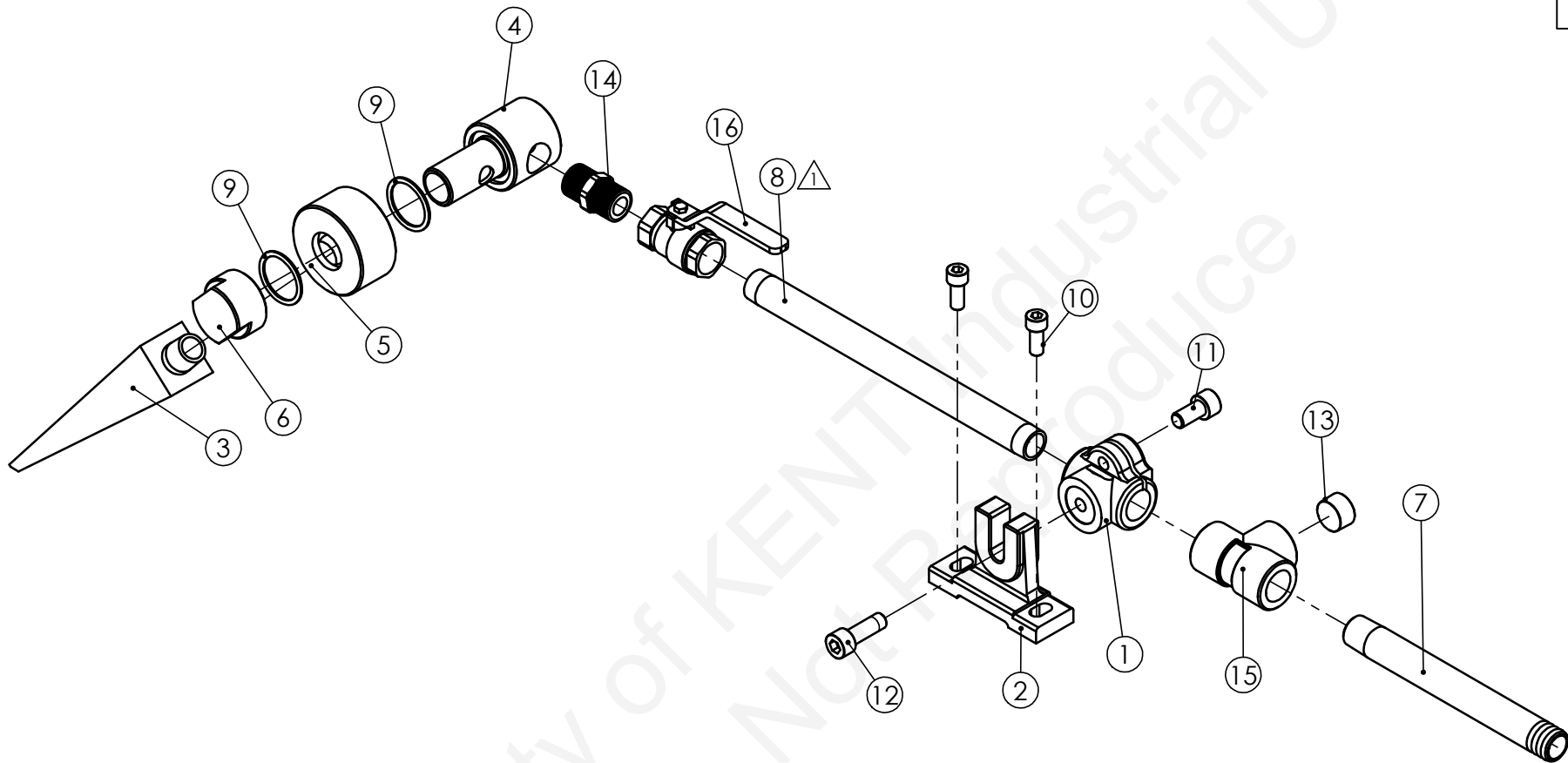
25	HS5-06008	Round head socket screw		M6*8L	7
26	HS7-03	Plug		3/8"	1
27	HW0-051010	Flat gasket		M6*16L	3
28	HW0-081615	Flat gasket		8*16*1.5t	4
29	HW0-102120	Flat Washer		10*21*2.0t	4
30	HW0-132530	Flat gasket		13*25*3t	4
31	MM-5H4P622-1	Motor		5HP4P 50/60HZ	1

Property of KENT Industrial
Do Not Reproduce

3.09kg

R01

2 / 2



	□	□	□
	±	±	±
1-4	0.05	0.1	0.3
4-16	0.07	0.2	0.5
16-63	0.1	0.3	0.7
63-250	0.2	0.5	1.2
250-1000	0.3	0.8	2
1000-2000	0.5	1.2	3.1

1:4

C1

R1

1

2014/04/14

Coolant pipe

KUG-27

2706-6024P



2020/04/27 2199

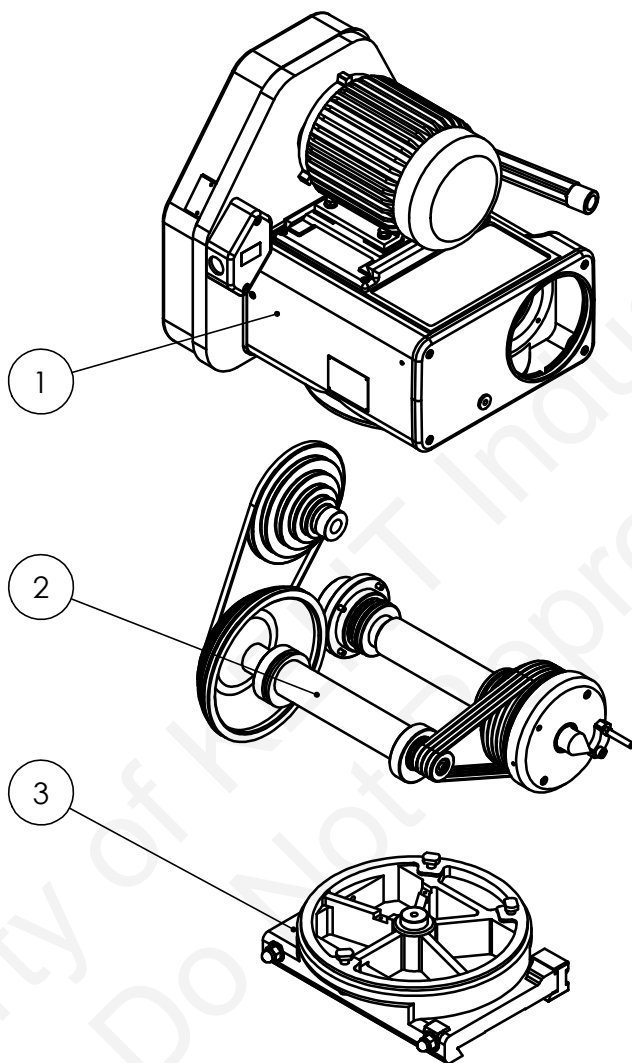
Edit.	R01	Docu. Title	2706-6024P		
Date	Apr 27, 20			Page	Page 1 of 1

No.	Drawing No.	Name	Material	Spec.	Quantity
1	2706-6022	Coolant pipe seat			1
2	2706-6024	Coolant pipe frame			1
3	2706-6031	Coolant nozzle			1
4	2706-6036	Coolant sprayer			1
5	2706-6037	Rotating head			1
6	2706-6038	Fixing nut			1
7	2706-7048	Coolant pipe			1
8	JL-04240	Pipe			1
9	HOG-G030	O-ring		G30(12S-213)	2
10	HS2-08020	Hex socket screws		M8*20L	2
11	HS2-10020	Hex socket screws		M10*20L	1
12	HS2-10030	Hex socket screws		M10*30L	1
13	HS7-04	Plug		1/2"	1
14	OT-3FE0404	Connector		1/2"-1/2"PT	1
15	OT-3NW304	Adaptor		1/2"	1
16	OW-04	Ball valves		1/2"	1

181.45kg

R00

2 / 2



	□	□	□
	±	±	±
1-4	0.05	0.1	0.3
4-16	0.07	0.2	0.5
16-63	0.1	0.3	0.7
63-250	0.2	0.5	1.2
250-1000	0.3	0.8	2
1000-2000	0.5	1.2	3.1

1:10

C1

R1

1

2015/03/05

Workhead set

KUG-35

3506-20P01

Edit.	R00	Docu. Title	3506-20P01		
Date	Sep 04, 14			Page	Page 1 of 1

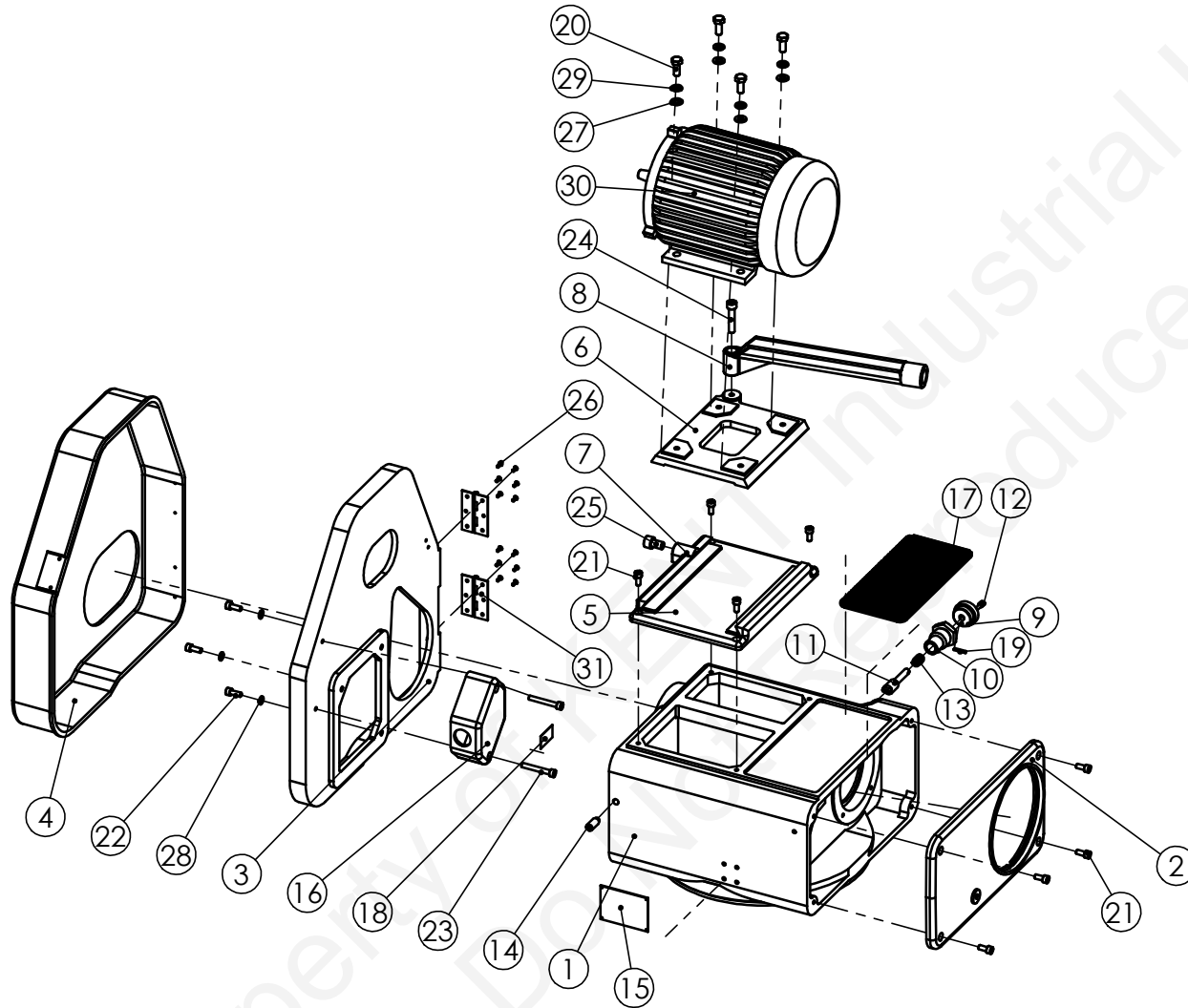
No.	Drawing No.	Name	Material	Spec.	Quantity
1	2706-22P01	Work head Box Set			1
2	2706-21P01	Work head spindle Set			1
3	3506-23P01	Work head base			1

Property of KENT Industrial USA
Do Not Reproduce

94.50 kg

ROO

2 / 2



	□	□	□
	±	±	±
1-4	0.05	0.1	0.3
4-16	0.07	0.2	0.5
16-63	0.1	0.3	0.7
63-250	0.2	0.5	1.2
250-1000	0.3	0.8	2
1000-2000	0.5	1.2	3.1

1:10

C1

R1

1

2014/03/06

Workhead assembly

KUG-27

2706-22P01

Edit.	R00	Docu. Title	2706-22P01		
Date	Sep 04, 14			Page	Page 1 of 2

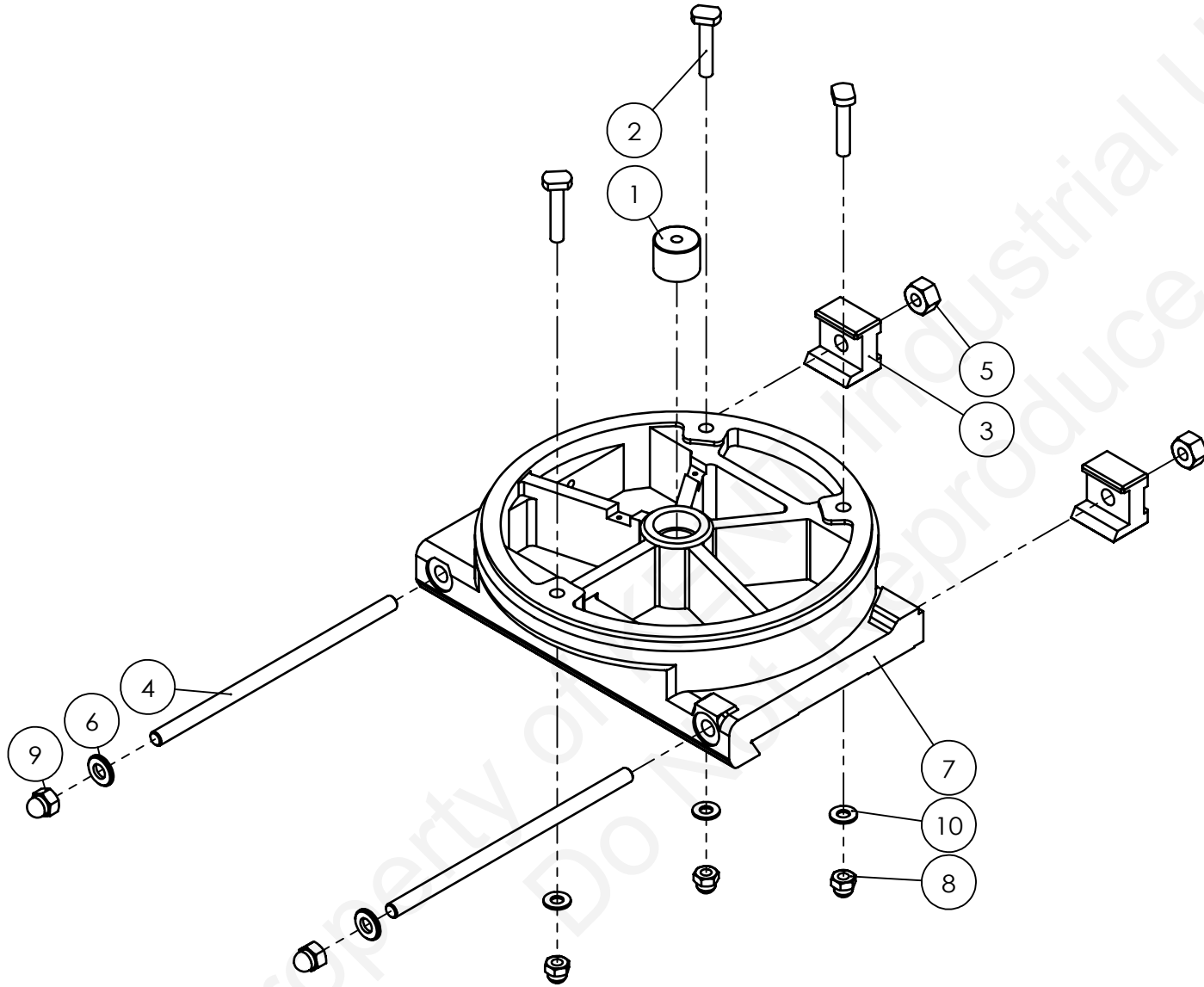
No.	Drawing No.	Name	Material	Spec.	Quantity
1	2706-2001	Spindle box			1
2	2706-2003	Cover			1
3	2706-2004-2	Outer pulley cover			1
4	2706-2005	Inter pulley cover			1
5	2706-2024	pulley base			1
6	2706-2025	Motor base			1
7	2706-2026	Stop plug			1
8	2706-2027	Electric wire base			1
9	2706-2028	Button			1
10	2706-2029	Stop bolt			1
11	2706-2030	Stop pin			1
12	2706-2031	Fixing pin			1
13	2706-2032	Spring			1
14	2706-2033-6	Fixing spring			1
15	2706-2039-1	Rotational Speed plank			1
16	2706-2040	Electric equipment box			1
17	2706-2041	Washer			1
18	2706-2048	Spindle inching Guide Board			1
19	HP1-03018	Spring pin		3*18L	1
20	HS1-08020	Hex head cap screws		M8*20L	4
21	HS2-06014	Hex socket screws		M6*14L	8
22	HS2-06016	Hex socket screws		M6*16L	3

Edit.	R00	Docu. Title	2706-22P01		
Date	Sep 04, 14			Page	Page 2 of 2

No.	Drawing No.	Name	Material	Spec.	Quantity
23	HS2-06045	Hex socket screws		M6*45L	2
24	HS2-08040	Hex socket screws		M8*40L	1
25	HS2-10016	Hex socket screws		M10*16L	1
26	HS5-03008	Round head socket screw		M3*8L	12
27	HW0-081615	Flat washer		8*16*1.5t	4
28	HW1-S06	Spring washer		6MM	3
29	HW1-S08	Spring washer		8MM	4
30	MM-0.5H6P622S	Induction motor (Oblique spindle)		1/2HP 6P 60HZ/220V/ 380V	1
31	UW-016-3	Back buckle		2-1/2" 3Hole T:1.2	2

22.37kg

R00



	□	□	□
	±	±	±
1-4	0.05	0.1	0.3
4-16	0.07	0.2	0.5
16-63	0.1	0.3	0.7
63-250	0.2	0.5	1.2
250-1000	0.3	0.8	2
1000-2000	0.5	1.2	3.1

1:5

C1

R1

1

2014/04/18

Workhead Base

KUG-35

3506-23P01

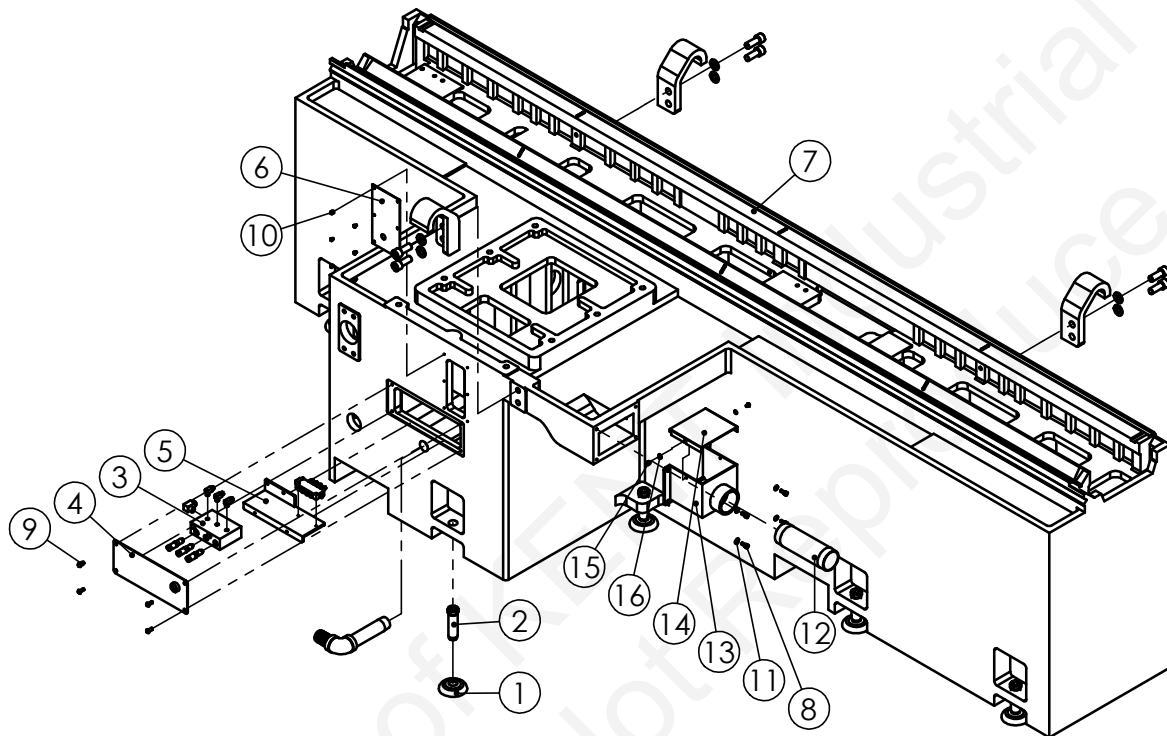
Edit.	R00	Docu. Title	3506-23P01		
Date	Apr. 18, 14			Page	Page 1 of 1

No.	Drawing No.	Name	Material	Spec.	Quantity
1	2706-2034	Pin			1
2	2706-2035	Locking Screw			3
3	2706-2036	Block			2
4	2706-2037	Fixing screw			2
5	2706-2038	Nut			2
6	2706-2044	Gasket			2
7	3506-2002	Work head base			1
8	HN2-10150	Nut		M10*P1.5	3
9	HN2-12175	Nut		M12*P1.75	2
10	HW0-102120-1	Flat Washer		10*21*2.0t	3

2078.89 kg

R00

2 / 2



	□	□	□
	±	±	±
1-4	0.05	0.1	0.3
4-16	0.07	0.2	0.5
16-63	0.1	0.3	0.7
63-250	0.2	0.5	1.2
250-1000	0.3	0.8	2
1000-2000	0.5	1.2	3.1

1:20

C1

R1

1

2017/07/17

Lubrication/Water

KUG-27

2710N-01P03

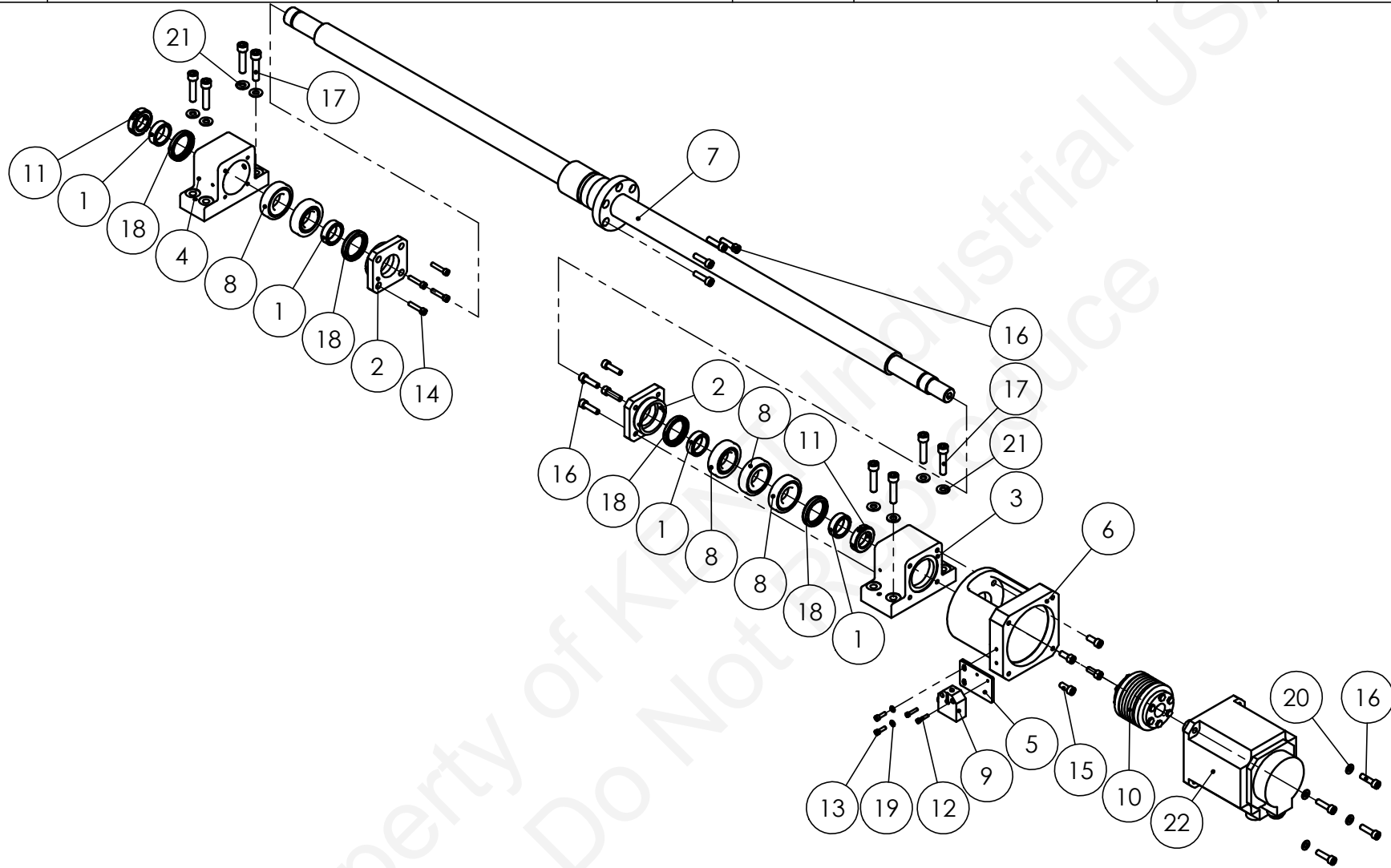
Edit.	R00	Docu. Title	2710N-01P03		
Date	July 17, 17			Page	Page 1 of 1

No.	Drawing No.	Name	Material	Spec.	Quantity
1	2706-0091	Leveling Plate			11
2	2706-0094	Leveling bolt			11
3	2706-6007-1P	Lubrication adjustment valve			1
4	2706N-0030	Cover			1
5	2706N-0031	Adjustment valve fixing plate			1
6	2710-0045-1	Dustproof cover			1
7	2710N-0001-3	Machine base			1
8	HS2-06015	Socket head cap screws		M6*15L	4
9	HS5-06016	Round head socket screws		M6*16L	4
10	HSB-04006	Round head phillips screw		M4*6L	6
11	HW0-061310	Flat gasket		16*30*3t	4
12	JL-20180	Pipe			1
13	2706-0100	Water Box			1
14	2706-0101	Water Box cover			1
15	HS5-05008	Round head socket screws		M6*16L	2
16	HW0-051010	Flat gasket		5*10*1t	2

47.75 kg

R00

2 / 2



	□	□	□
	±	±	±
1-4	0.05	0.1	0.3
4-16	0.07	0.2	0.5
16-63	0.1	0.3	0.7
63-250	0.2	0.5	1.2
250-1000	0.3	0.8	2
1000-2000	0.5	1.2	3.1

1:10

C1

R1

1

2015.04.08

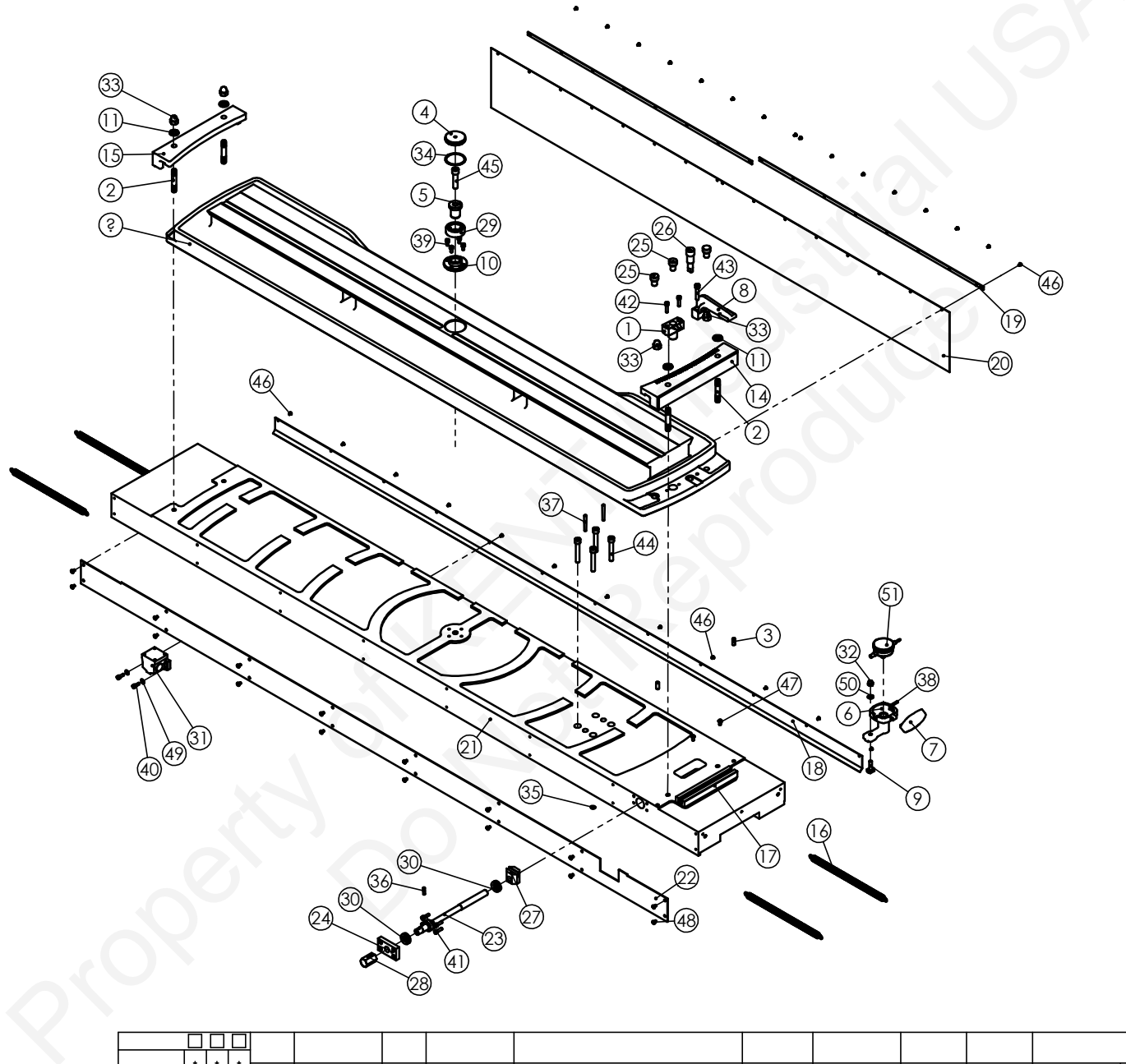
Z-axis ball screw

KUG-27

2710N-31P02

Edit.	R00	Docu. Title	2710N-31P02		
Date	May. 14, 15			Page	Page 1 of 1

No.	Drawing No.	Name	Material	Spec.	Quantity
1	06AN-0505-1	Bush			4
2	06AN-0506-1	Bearing cover			2
3	1512-0504-1	Right bearing seat			1
4	1512-0504-2	Left bearing seat			1
5	-	-	-	-	-
6	2706N-4003-2	Motor base			1
7	2710N-3013	Z-axis ball screw		R-40-5(B2)-FDV-1332-1538-0.005	1
8	BS-30TAC62BP4	Angular ball bearing		30TAC62BP4	5
9	-	-	-	-	-
10	HF0-BK3-150-87-25-F16	Coupling		BK3-150-87-25-F16	1
11	HN1-YSRM03015	Nut		YSRM30XP1.5	2
12	-	-	-	-	-
13	-	-	-	-	-
14	HS2-06030	Hexagonal screw		M6*30L	4
15	HS2-08020	Hexagonal screw		M8*20L	4
16	HS2-08030	Hexagonal screw		M8*30L	13
17	HS2-10045	Hexagonal screw		M10*45L	8
18	HTC-04005208	Oil seal		TC 40x52x8t	4
19	-	-	-	-	-
20	HW0-081615	Flat Washer		8*16*1.5t	4
21	HW0-102120	Flat Washer		10*21*2.0t	8
22	MS-HC-SFS152K	Mitsubishi servo motor		1.5KW/2000rpm	1



	□	□	□
1-4	0.05	0.1	0.3
4-16	0.07	0.2	0.5
16-63	0.1	0.3	0.7
63-250	0.2	0.5	1.2
250-1000	0.3	0.8	2
1000-2000	0.5	1.2	3.1

1:12

C1

R1

1

2015/05/13

Table assembly

KUG-27

2710N-32P02

Edit.	R00	Docu. Title	2710N-32P02		
Date	May. 14, 15			Page	Page 1 of 3

No.	Drawing No.	Name	Material	Spec.	Quantity
1	2706-0013-1	Angle pointer			1
2	2706-0016	Stud			4
3	2706-0017	Fixing pin			2
4	2706-0019	Plug			1
5	2706-0020-2	Sleeve			1
6	2706-0021	Gauge base			1
7	2706-0022	Gauge cover			1
8	2706-0023	Base			1
9	2706-0024	T type of Bolt			1
10	2706-0079-1	Fixed base			1
11	2706-2044	Washer			4
12	2706N-3010	Nut base			1
13	2710-0005-2	Upper worktable			1
14	2710-0008-1	Right pressing board			1
15	2710-0009-1	Left pressing board			1
16	-	-	-	-	-
17	2710-0025	Gauge fixed base			1
18	2710-0035	Waterproof plate			1
19	2710-0036	Binder plate			2
20	2710-0037-1	Rubber plate			1
21	2706N-0004-1	Lower worktable			1
22	2710N-0022	Front Guard of lower worktable			1
23	2715-0056	Adjusting screw			1

Edit.	R00	Docu. Title	2710N-32P02		
Date	May. 14, 15			Page	Page 2 of 3

No.	Drawing No.	Name	Material	Spec.	Quantity
24	2715-0057	Standoff			1
25	2715-0058	Plug			3
26	2715-0058-1	Plug			1
27	2715-0059	Drive block			1
28	2715-0060	Adjusting cap			1
29	BR-1205	Automatic self-aligning ball bearing			1
30	BT-51103	Thrust bearing		51103	2
31	EK-819B02D08	Single-unit Limit switch			1
32	HN2-08125	Hooded		M8*1.25	1
33	HN2-12175	Hooded		M12*P1.75	4
34	HOG-G050	O ring		G50(12-111 24-212)	1
35	HOP-P009	O ring		P9	1
36	HP0-I040200	Angular pin		4#*20L	1
37	HP0-I060500	Angular pin		φ 6#*50L	2
38	HP2-05030	Horizontal pin		5#*30L	1
39	HS2-06012	Hexagonal screw		M6*12L	4
40	HS2-06016	Hexagonal screw		M6*16L	2
41	HS2-06020	Hexagonal screw		M6*20L	4
42	HS2-06025	Hexagonal screw		M6*25L	2
43	HS2-08040	Hexagonal screw		M8*40L	1
44	HS2-10065	Hexagonal screw		M10*65L	4
45	HS2-12050	Hexagonal screw		M12*50L	1
46	HS5-04006	Round socket screw		M4*6L	28

Edit.	R00	Docu. Title	2710N-32P02		
Date	May. 14, 15			Page	Page 3 of 3

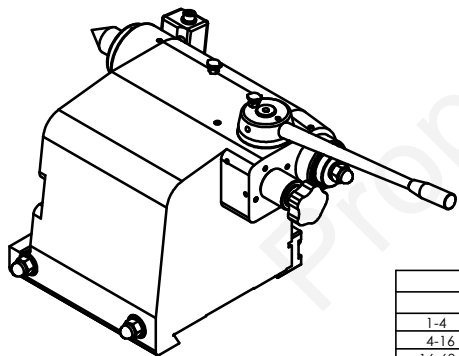
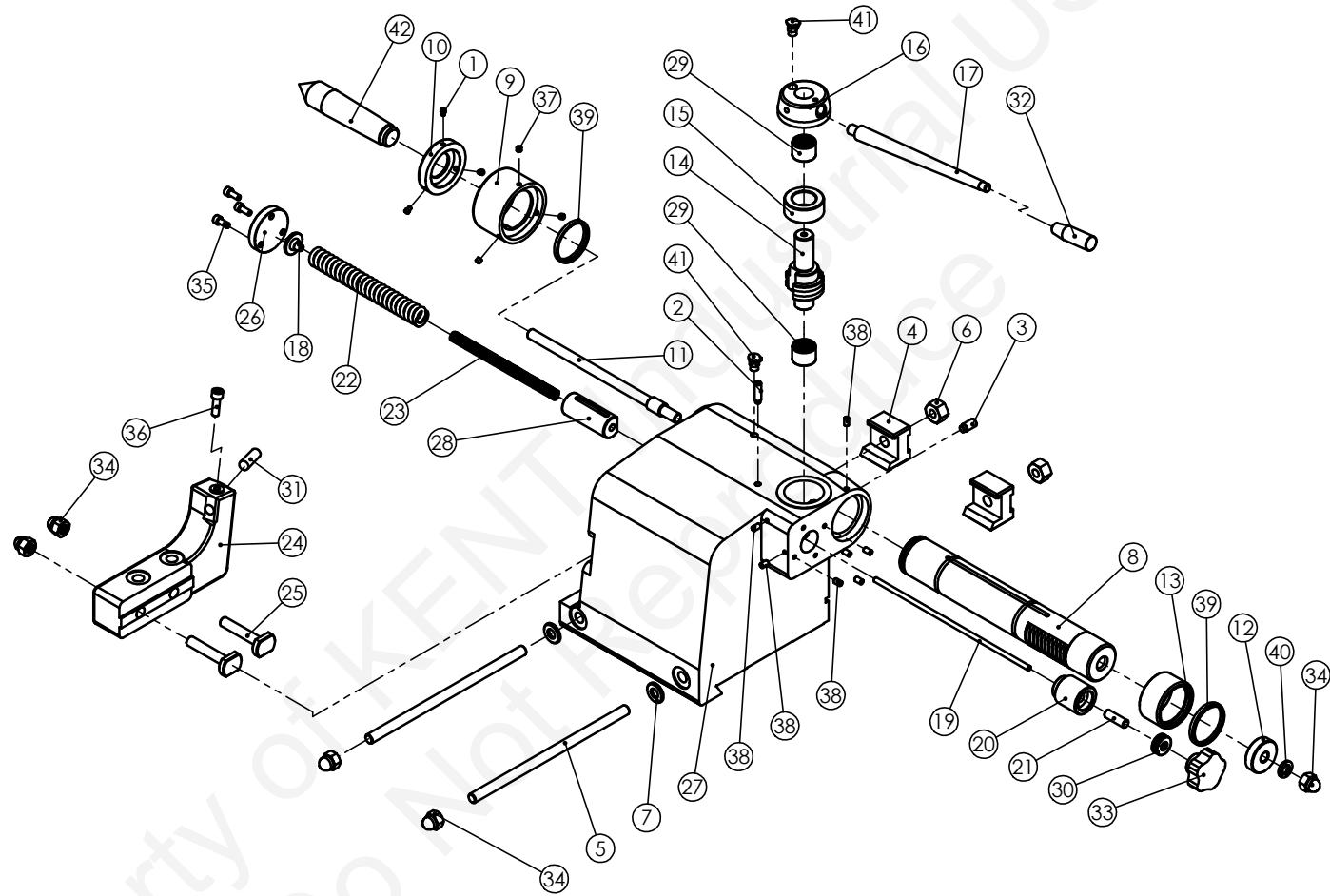
No.	Drawing No.	Name	Material	Spec.	Quantity
47	HS5-06012	Round socket screw		M6*12L	2
48	HSB-05008	Round head phillips screw		M5*8L	16
49	HW0-061310	Flat gasket		6*13*1t	2
50	HW0-081615	Flat gasket		8*16*1.5t	1
51	TO-401-4	Dial indicator		PEACOCK	1

Property of KENT Industries
Do Not Reproduce

Edit.	R00	Docu. Title	3506-4002P		
Date	Mar. 27, 15			Page	Page 1 of 1

No.	Drawing No.	Name	Material	Spec.	Quantity
1	3506-4002	Bearing Base			1
2	3506-4003	Bearing Cover			1
3	3506-4005	Inner spacer			1
4	3506-4006	External spacer			1
5	BS-ZKLN2557-2RS	Angular Balls Bearing		ZKLN2557 2RS	2
6	HS2-06025	Socket head cap screws		M6*25L	4

Property of KENT Industrial USA
Do Not Reproduce



	□	□	□
	*	*	*
1-4	0.05	0.1	0.3
4-16	0.07	0.2	0.5
16-63	0.1	0.3	0.7
63-250	0.2	0.5	1.2
250-1000	0.3	0.8	2
1000-2000	0.5	1.2	3.1

1:6

C1

R1

2022/1/17

Tailstock Set

KUG-35

3506-51P02

Edit.	R00	Docu. Title	3506-51P02		
Date	Jan 17, 22			Page	Page 1 of 2

No.	Drawing No.	Name	Material	Spec.	Quantity
1	2706-2033-1	Fixing screw			3
2	2706-2033-4	Fixing screw			1
3	2706-2033-5	Fixing screw			1
4	2706-2036	Briquetting			2
5	2706-2037	Locking screw			2
6	2706-2038	Nut			2
7	2706-2044	Washer			2
8	2706-5002	Center case			1
9	2706-5003-1	Case			1
10	2706-5004-1	Dust-proof Cover			1
11	2706-5005	Eject lever			1
12	2706-5006-1	Button			1
13	2706-5007-1	Back cover			1
14	2706-5009	Gear wheel			1
15	2706-5010	Spacer ring			1
16	2706-5011-1	Handles base			1
17	2706-5012-2	Handles			1
18	2706-5013	Spring base			1
19	2706-5014	Adjustment screw			1
20	2706-5016-2	Fixing Case			1
21	2706-5017	Locking screw			1

Edit.	R00	Docu. Title	3506-51P02		
Date	Jan 17, 22			Page	Page 2 of 2

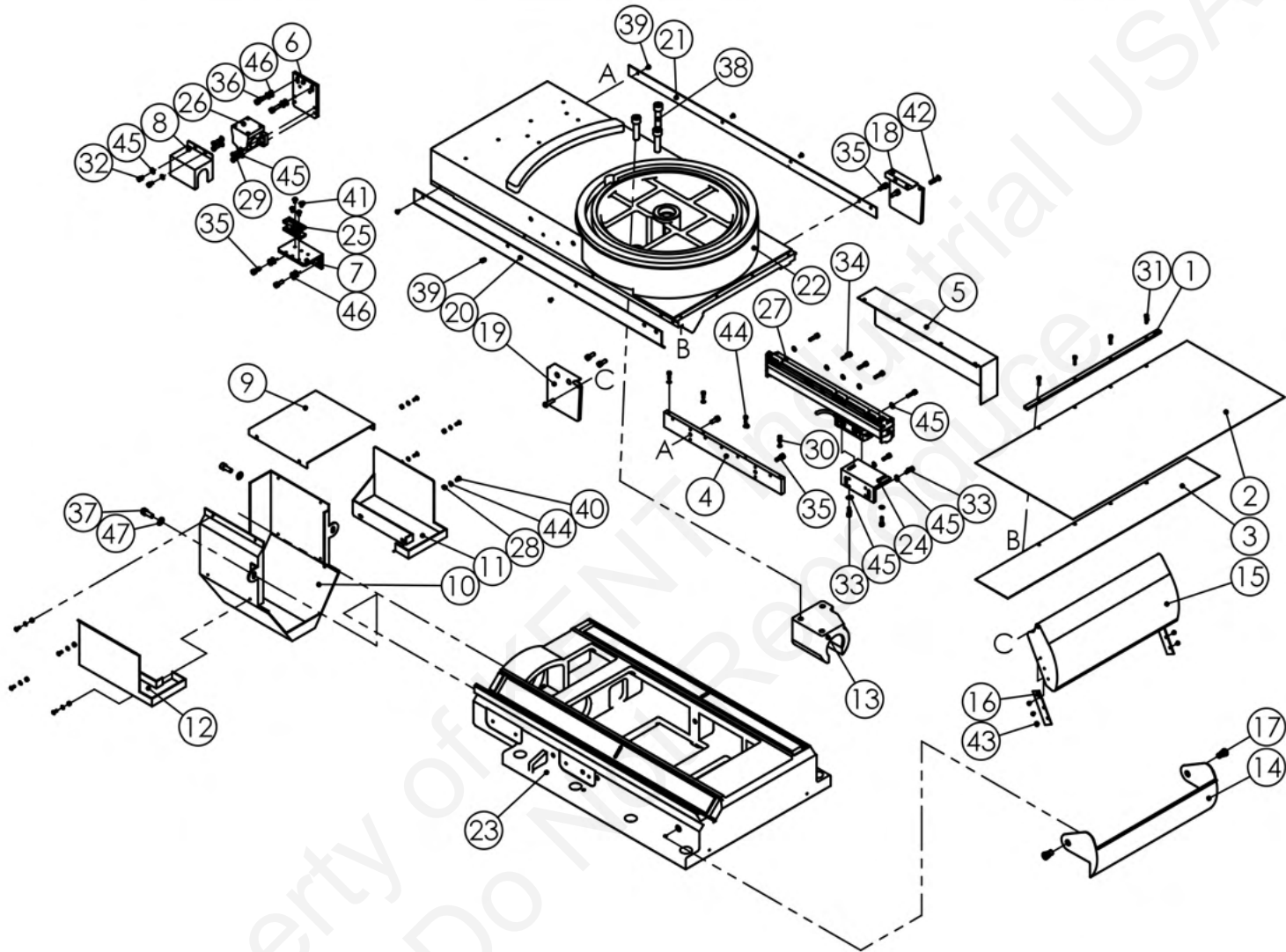
No.	Drawing No.	Name	Material	Specification	Quantity
22	2706-5019	Spring			1
23	2706-5020	Spring			1
24	2706-5043	Grinding wheel dressing device			1
25	2706-5044	Fixing screw			2
26	2706N-5039	Cover			1
27	3506N-5001	Tail stock			1
28	56-754	Supporting tube			1
29	BQ-TLA2220Z	Needle bearings		TLA2220Z (22x28x20t)	2
30	BT-51100	Thrust bearing		51100 (10x24x9t)	1
31	GP-014	Diamond Tool		20#	1
32	HJ0-006	Handle		M10	1
33	HJ1-006	Handle		66476	1
34	HN2-12175	Nut		M12*P1.75	5
35	HS2-06015	Hex Socket Screws		M6*15L	3
36	HS2-08025	Hex Socket Screws		M8*25L	1
37	HS3-06005	Set Screw		M6*5L	3
38	HS3-06010	Set Screw		M6*10L	7
39	HTC-SER-48#	Oil seal		SER-48#	2
40	HW1-S12	Spring Washer		12mm	1
41	OT-3CUP01	Copper oil cup		1/8"	2
42	SM-MT4	Center		MT4 10MM	1

Edit.	R01	Docu. Title	3506N-41P02		
Date	Apr. 29, 20			Page	Page 1 of 1

No.	Drawing No.	Name	Material	Spec.	Quantity
1	2706N-4003-3	Infeed motor base			1
2	2706N-4016	Inner spacer ring			1
3	3506-4002P	Bearing housing set			1
4	3506-4007	Cushion			2
5	3506N-4001	X axis ball screw			1
6	HF0-JA620K24	Coupling		JA620K24	1
7	HN1-YSFM02515	Nut		YSFM25*P1.5	1
8	HS2-06020	Hexagonal screws		M6*20L	5
9	HS2-08030	Hexagonal screws		M8*30L	4
10	HS2-08035	Hexagonal screws		M8*35L	4
11	HS2-10035	Hexagonal screws		M10*35L	4
12	HW1-S08	Spring washer		8mm	4
13	MS-HC-SFS152K	Mitsubishi servo motor		1.5KW/2000rpm	1
14	2710N-4037-1	Nut Base			1

247.43 kg

R00



	□	□	□
1-4	±	±	±
4-16	0.05	0.1	0.3
16-63	0.07	0.2	0.5
63-250	0.1	0.3	0.7
250-1000	0.2	0.5	1.2
1000-2000	0.3	0.8	2
	0.5	1.2	3.1

1:15

C1

R1

1

2015/06/03

Grinding Wheel saddle

35

3506N-42P01

Edit.	R00	Docu. Title	3506N-42P01		
Date	Jun. 04, 15			Page	Page 1 of 3

No.	Drawing No.	Name	Material	Spec.	Quantity
1	2706-1058	Pressing Plate	SS41		1
2	2706-1063	Waterproof rubber plate			1
3	2706-1076	Waterproof rubber plate			1
4	2706N-1010	Linear scale fixing board			1
5	2706N-1011	Waterproof cover of linear scale	SS41		1
6	2706N-1034	Restrict switch	SS41		1
7	2706N-1035	Lifter seat	SS41		1
8	2706N-1036	Waterproof cover	SPCC		1
9	2706N-4006-1	Upper Cover	SPCC		1
10	2706N-4042-1	Back Cover	SPCC		1
11	2706N-4061-1	Grinding Wheel base Right oil picker	SPCC		1
12	2706N-4062-1	Grinding Wheel base Left oil picker	SPCC		1
13	2710N-4037-1	Nut Base	FC30		1
14	3506-1011	Cover	SS41P		1
15	3506-1011-2	Base Cover	SS41		1
16	3506-1011-2A	Spacer			2
17	3506-1012	Fixing bolt			2
18	3506-1056	Base cover right bracket	FC25		1
19	3506-1057	Base cover left bracket	FC25		1
20	3506-1061	Left waterproof board	SS41		1
21	3506-1062	Right waterproof board	SS41		1
22	3506N-1002	Grinding Wheel saddle	FC30		1
23	3506N-1003	Grinding wheel base	FC30		1

Edit.	R00	Docu. Title	3506N-42P01		
Date	Jun. 04, 15			Page	Page 2 of 3

No.	Drawing No.	Name	Material	Spec.	Quantity
24	-	-	-	-	-
25	3506P-4211-1	Stop block	SS41		2
26	EK-819B02D08	Limit Switch			1
27	-	-	-	-	-
28	HN0-04070	Nut		M4*P0.7	8
29	HS1-05014	Hex screws		M5x14L	4
30	HS2-04012	Hexagonal screw		M4*12L	4
31	HS2-04016	Hexagonal screw		M4*16L	4
32	HS2-05008	Hexagonal screw		M5x8L	2
33	-	-	-	-	-
34	-	-	-	-	-
35	-	-	-	-	-
36	HS2-06020	Hexagonal screw		M6*20L	2
37	HS2-08020	Hexagonal screw		M8*20L	2
38	HS2-12045	Hexagonal screw		M12XP1.75X45L	3
39	HS5-04006	Round socket screws		M4*6L	6
40	HS5-04010	Round socket screws		M4*10L	8
41	HS5-05008	Round socket screws		M5*8L	4
42	HS5-06025	Round socket screws		M6*25L	2
43	HSB-04004	Round head phillips screw		M4*4L	6
44	HW0-040808	Flat washer		4*8*8t	12
45	HW0-051010	Flat washer		5*10*1t	15

Edit.	R00	Docu. Title	3506N-42P01		
Date	Jun. 04, 15			Page	Page 3 of 3

No.	Drawing No.	Name	Material	Spec.	Quantity
46	HW0-061310	Washer		6*13*1t	8
47	HW0-081615	Flat washer		8*16*1.5t	2

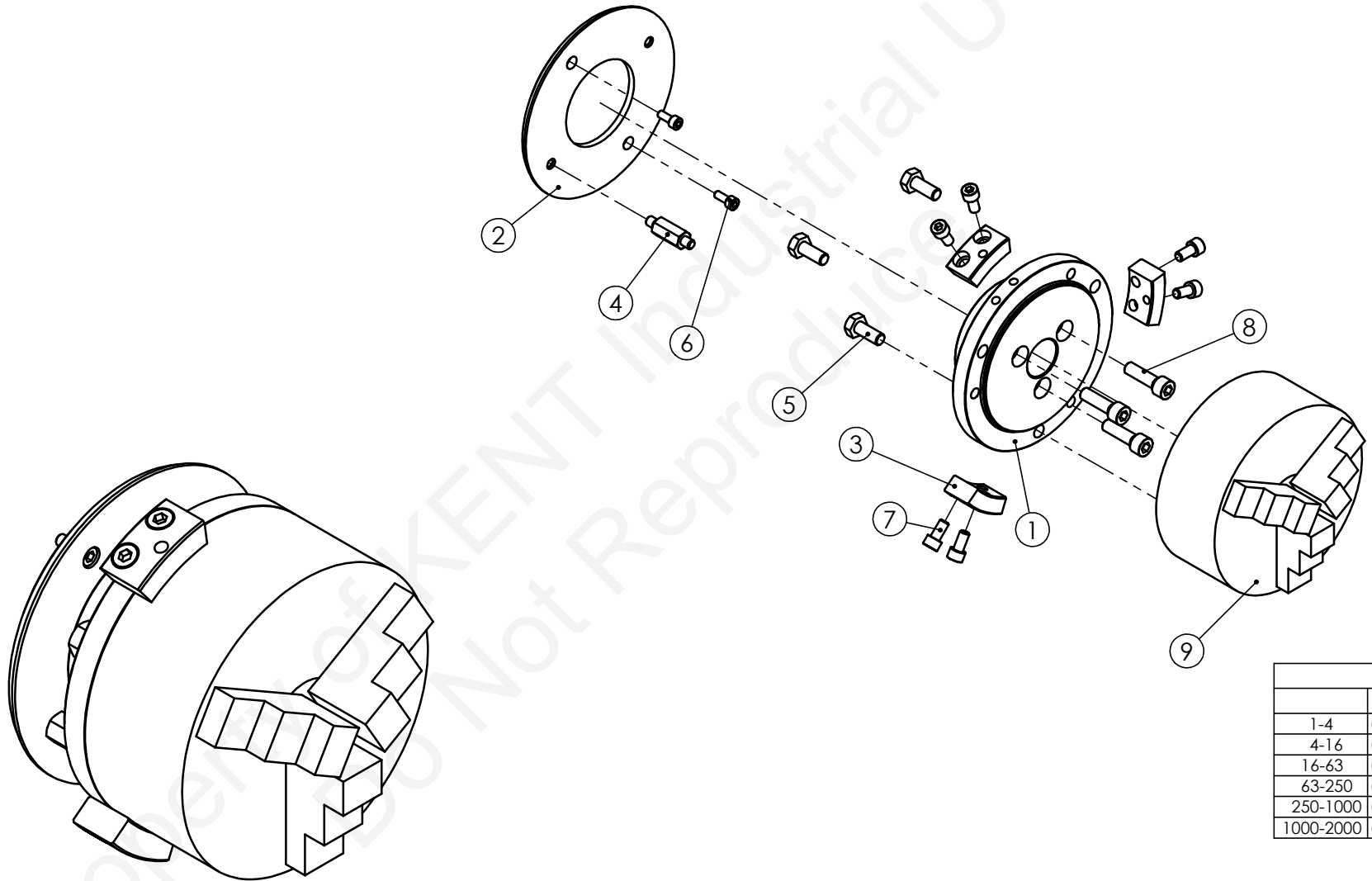
Property of KENT Industrial
Do Not Reproduce

Edit.	R00	Docu. Title	3506-5022P		
Date	Feb. 07, 20			Page	Page 1 of 1

No.	Drawing No.	Name	Material	Spec.	Quantity
1	2706-2033-2	Fixed screw			1
2	2706-2036	Fixed block			1
3	2706-2037	Locking bolt			1
4	2706-2038	Nut			1
5	2706-2044	Washer			1
6	2706-5021	Adjusting nut			1
7	2706-5024	Upper adjusting screw			1
8	2706-5025	Adjusting nut			2
9	2706-5026	Fixed nut			2
10	2706-5027	Fixed cover			1
11	2706-5028	Upper contact block			1
12	2706-5029	Lower adjusting rod			1
13	2706-5030	Spring			1
14	3506-5022	2-point center work rest			1
15	3506-5023	Upper fulcrum shaft			1
16	3506-5031	Fulcrum bracket			1
17	3506-5033	Lower fulcrum shaft			1
18	3506-5038	Lower contact block			1
19	HN0-06100	Nut		M6*P1.0	1
20	HN0-16200	Nut		M16*P2.0	1
21	HN2-12175	Nut		M12*P1.75	1
22	HS4-04008	Flat head screw		M4*8L	3
23	HTC-DS03204207	Oil seal		DS32x42x7	1
24	UW-018	Grease nipple		1/8"	1

16.42 kg

R00



1:3

C1

R1

1

2018/03/29

6" 3-jaw chuck

KUG-27

2706-24P03

Edit.	R00	Docu. Title	2706-24P03		
Date	Mar 29, 18			Page	Page 1 of 1

No.	Drawing No.	Name	Material	Spec.	Quantity
1	2706-7041	Center ring and chuck plate			1
2	2706-7042	Waterproof lid			1
3	2706-7043	Center ring			3
4	2706-7051	Drive rod			1
5	HS1-10025	Hexagon screws		M10*25L	3
6	HS2-06015	Socket head cap screws		M6*15L	2
7	HS2-08016	Socket head cap screws		M8*16L	6
8	HS2-10035	Socket head cap screws		M10*35L	3
9	SP-SK-06	6" 3-Jaw chuck		SK-06	1